

State of Wyoming Corner Record

(In compliance with the CORNER PERPETUATION AND FILING ACT, Wyoming Statutes, 2013 Section 33-29-901 through 33-29-910, and the Rules and Regulations of the Board of Professional Engineers and Professional Land Surveyors)

Reverse side of this form may be used if more space is needed.

Record of original survey and citation of source of historical information (if corner is lost or obliterated). Description of corner monumentation evidence found and/or monument and accessories established to perpetuate the location of this corner. Sketch of relative location of monument, accessories, and reference points with course and distance to adjacent corner(s) (if determined in this survey). Method and rationale for reestablishment of lost or obliterated corner.

DETERMINED CORNER TO BE LOST – METHOD FOR REESTABLISHMENT: Double Proportionate Measurement.

ORIGINAL GLO RECORD: Sandstone 20"X12"X8"

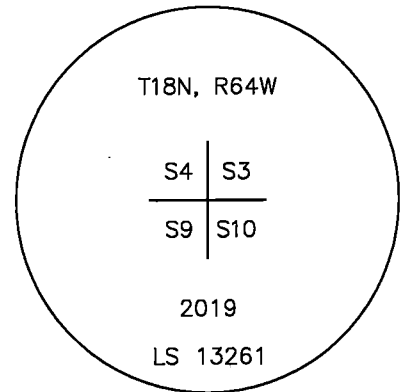
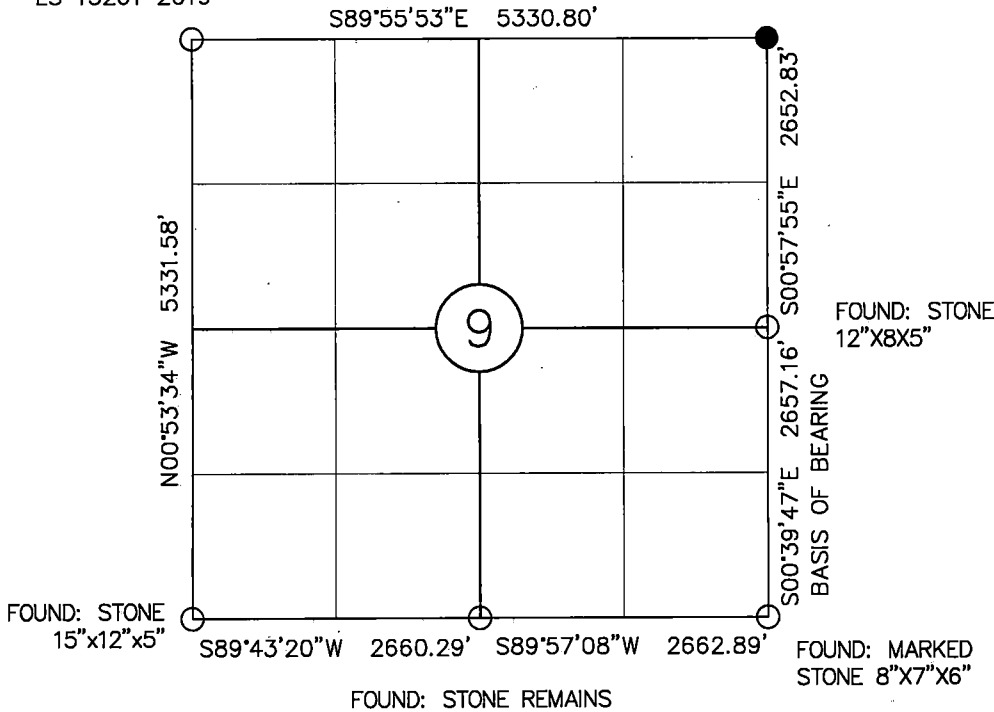
MONUMENT FOUND: No monument or evidence found

MONUMENT SET: 2½" Aluminum Cap on a #6 Rebar four (4) inches above ground, stacked stones around monument for corner common to Sections 3, 4, 9 and 10.

All dimensions are in US Survey Feet

Monument location

FOUND: 2½" ALUM.
CAP ON #6 REBAR
LS 13261 2019



Monument Inscription

Date of Field Work: 09/11/2019

Office Reference: 1903-005 #1007

See Reverse Side for References

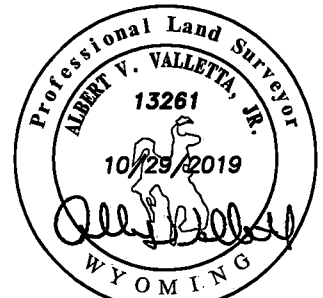
Cross Index Plat

	1	2	3	4	5	6	7	8	9	10	11	12	13	14	15	16	17	18	19	20	21	22	23	24	25
A	+	+	+	+	+	+	+	+	+	+	+	+	+	+	+	+	+	+	+	+	+	+	+	+	+
B	+	+	+	+	+	+	+	+	+	+	+	+	+	+	+	+	+	+	+	+	+	+	+	+	+
C	+	6	+	+	5	+	+	+	+	4	+	+	+	+	3	+	+	+	+	+	+	+	+	+	+
D	+	+	+	+	+	+	+	+	+	+	+	+	+	+	+	+	+	+	+	+	+	+	+	+	+
E	+	+	+	+	+	+	+	+	+	+	+	+	+	+	+	+	+	+	+	+	+	+	+	+	+
F	+	+	+	+	+	+	+	+	+	+	+	+	+	+	+	+	+	+	+	+	+	+	+	+	+
G	+	+	7	+	+	8	+	+	+	9	+	+	+	+	10	+	+	+	+	+	+	+	+	+	+
H	+	+	+	+	+	+	+	+	+	+	+	+	+	+	+	+	+	+	+	+	+	+	+	+	+
J	+	+	+	+	+	+	+	+	+	+	+	+	+	+	+	+	+	+	+	+	+	+	+	+	+
K	+	+	+	+	+	+	+	+	+	+	+	+	+	+	+	+	+	+	+	+	+	+	+	+	+
L	+	+	+	+	+	+	+	+	+	+	+	+	+	+	+	+	+	+	+	+	+	+	+	+	+
M	+	+	+	+	+	+	+	+	+	+	+	+	+	+	+	+	+	+	+	+	+	+	+	+	+
N	+	+	+	+	+	+	+	+	+	+	+	+	+	+	+	+	+	+	+	+	+	+	+	+	+
O	+	+	+	+	+	+	+	+	+	+	+	+	+	+	+	+	+	+	+	+	+	+	+	+	+
P	+	+	+	+	+	+	+	+	+	+	+	+	+	+	+	+	+	+	+	+	+	+	+	+	+
Q	+	+	+	+	+	+	+	+	+	+	+	+	+	+	+	+	+	+	+	+	+	+	+	+	+
R	+	+	+	+	+	+	+	+	+	+	+	+	+	+	+	+	+	+	+	+	+	+	+	+	+
S	+	+	+	+	+	+	+	+	+	+	+	+	+	+	+	+	+	+	+	+	+	+	+	+	+
T	+	+	+	+	+	+	+	+	+	+	+	+	+	+	+	+	+	+	+	+	+	+	+	+	+
U	+	+	+	+	+	+	+	+	+	+	+	+	+	+	+	+	+	+	+	+	+	+	+	+	+
V	+	+	+	+	+	+	+	+	+	+	+	+	+	+	+	+	+	+	+	+	+	+	+	+	+
W	+	+	+	+	+	+	+	+	+	+	+	+	+	+	+	+	+	+	+	+	+	+	+	+	+
X	+	+	+	+	+	+	+	+	+	+	+	+	+	+	+	+	+	+	+	+	+	+	+	+	+
Y	+	+	+	+	+	+	+	+	+	+	+	+	+	+	+	+	+	+	+	+	+	+	+	+	+
Z	+	+	+	+	+	+	+	+	+	+	+	+	+	+	+	+	+	+	+	+	+	+	+	+	+
	1	2	3	4	5	6	7	8	9	10	11	12	13	14	15	16	17	18	19	20	21	22	23	24	25

Firm/Agency, Address
DALEY LAND SURVEYING, INC.
17011 LINCOLN AVE., #361
PARKER, CO 80134
(303) 953-9841

This corner record was prepared by me or under my direction and supervision.

SEAL & SIGNATURE



FOR AND ON BEHALF OF
DALEY LAND SURVEYING INC.,
ALBERT V. VALLETTA, JR., PLS 13261



RECORDED 11/13/2019 AT 9:38 AM BK# 2647 PG# 133
Debra K. Lee, CLERK OF LARAMIE COUNTY, WY PAGE 1 OF 2

RECP #: 765656

Corner Name Northeast Corner Section 9, T 18 N, R 64 W, 6th P.M.

Cross-Index No.: E-13

County: LARAMIE

State of Wyoming Corner Record

(In compliance with the CORNER PERPETUATION AND FILING ACT, Wyoming Statutes, 2013 Section 33-29-901 through 33-29-910, and the Rules and Regulations of the Board of Professional Engineers and Professional Land Surveyors)

Reverse side of this form may be used if more space is needed.

Record of original survey and citation of source of historical information (if corner is lost or obliterated). Description of corner monumentation evidence found and/or monument and accessories established to perpetuate the location of this corner. Sketch of relative location of monument, accessories, and reference points with course and distance to adjacent corner(s) (if determined in this survey). Method and rationale for reestablishment of lost or obliterated corner.

DETERMINED CORNER TO BE LOST – METHOD FOR REESTABLISHMENT: Double Proportionate Measurement.

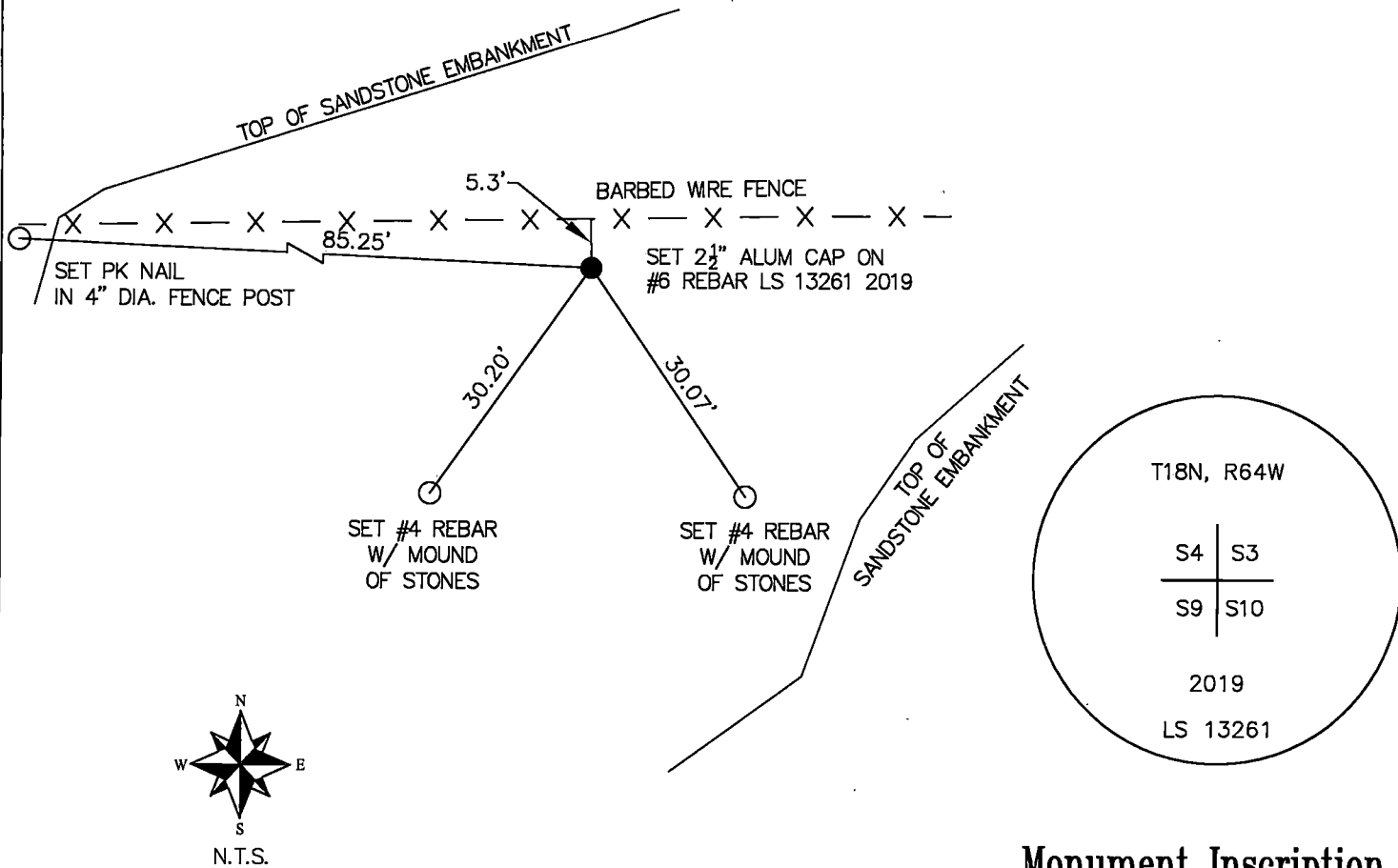
ORIGINAL GLO RECORD: Sandstone 20"X12"X8"

MONUMENT FOUND: No monument or evidence found

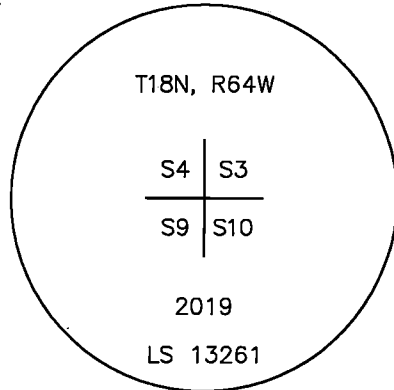
MONUMENT SET: 2½" Aluminum Cap on a #6 Rebar four (4) inches above ground, stacked stones around monument for corner common to Sections 3, 4, 9 and 10.

REFERENCES: Set References as shown below.

All dimensions are in US Survey Feet



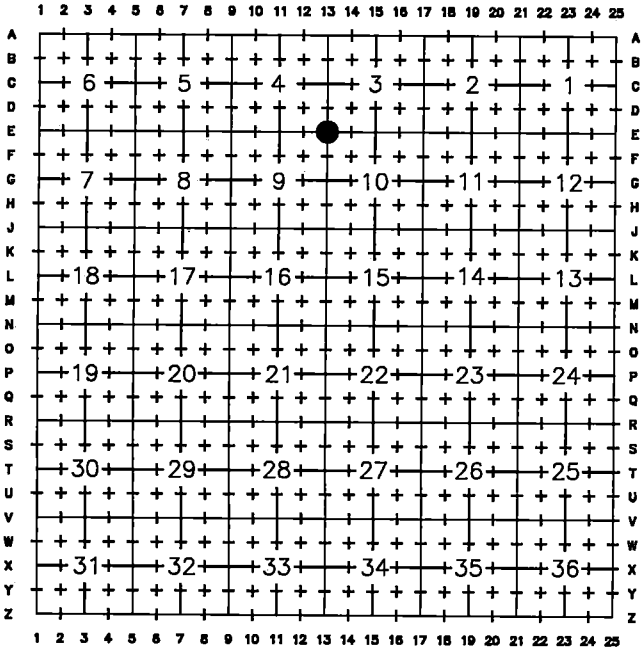
Monument Inscription



Date of Field Work: 09/11/2019

Office Reference: 1903-005 #1007

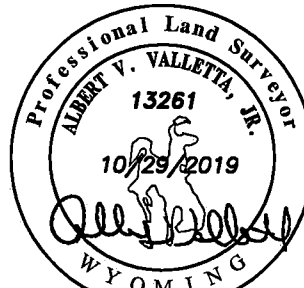
Cross Index Plat



Firm/Agency, Address
DALEY LAND SURVEYING, INC.
17011 LINCOLN AVE., #361
PARKER, CO 80134
(303) 953-9841

This corner record was prepared by me or under my direction and supervision.

SEAL & SIGNATURE



FOR AND ON BEHALF OF
DALEY LAND SURVEYING INC.,
ALBERT V. VALLETTA, JR., PLS 13261



RECORDED 11/13/2019 AT 9:38 AM BK# 2647 PG# 134
Debra K. Lee, CLERK OF LARAMIE COUNTY, WY PAGE 2 OF 2

RECP #: 765656

Corner Name Northeast Corner Section 9, T 18 N, R 64 W, 6th P.M.

Cross-Index No.: E-13

County: LARAMIE